

Puzzlewood

A Magical Woodland in the Forest of Dean

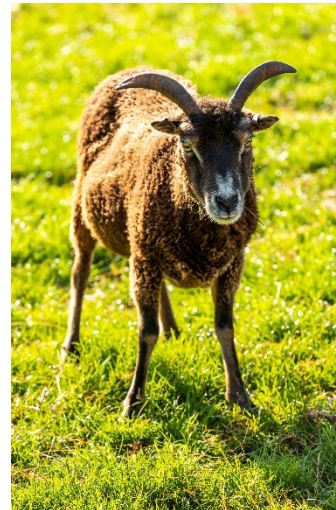
Animals KS1

Puzzlewood is a designated ancient woodland. It is a special, important and protected place. The woodland is so old it has developed intricate communities of plants, animals and fungi.

Puzzlewood is a unique environment for the study of animals, and the relationship between animals and humans. We have a variety of animals at Puzzlewood, including goats, donkeys, Shetland ponies, Highland cattle, Soay sheep, hens, ducks and rabbits.

It is ideal for a day of developing scientific skills within an enclosed environment.

We strongly recommend that you visit the site before your visit, as there are so many varied opportunities for creative curriculum development.



National Curriculum Programs of Study:

Science

Working Scientifically

asking simple questions and recognising that they can be answered in different ways

observing closely, using simple equipment

identifying and classifying

using their observations and ideas to suggest answers to questions

gathering and recording data to help in answering questions

Animals, including humans

identify and name a variety of common animals including, fish, amphibians, reptiles, birds and mammals

identify and name a variety of common animals that are carnivores, herbivores and omnivores describe and compare the structure of a variety of common animals (fish, amphibians, reptiles, birds and mammals including pets) identify

name, draw and label the basic parts of the human body and say which part of the body is associated with each sense

Suggested Learning Activities

Before you visit:

Share what the children already know about animals. Do they have pets? How do they look after them? What do they eat?

Animal classification. What 5 main groups can we use to identify and classify animals?

<https://www.bbc.co.uk/bitesize/topics/z6882hv>

Sort images of animals into the 5 groups. Into which group would their pets at home belong?

What are our senses? What parts of the body are linked to the senses?

<https://www.bbc.co.uk/bitesize/topics/zqbxqfr/articles/zxy987h>

During your visit:

You are requested to stay on the marked paths in order to preserve this important ancient site.

Walk around the animal enclosures. Photograph the animals. Using an animal identification key, can you work out which different animal groups the Puzzlewood animals fit into?

Carnivores, herbivores or omnivores? Use the animal information boards and your observations of the animals to work out what diet the Puzzlewood animals have. Record your findings on to a pictogram or tally chart.

Collect banks of words and phrases to describe each animal as you walk around for use in creative writing.

Use magnifying glasses and bug explorer kits to hunt for minibeasts.

Use a pre-downloaded bird song identifying app to listen to the birds while on site.

Sit down in silence in the wood next to a scowle. Use your senses to watch, listen, smell and touch the wood around you. Use an iPad to record in small groups what you discover. Are the sounds you hear loud or quiet?

Use a feely box/bag to guess what found object is inside. Can the children use scientific vocabulary to describe what they feel?

After your visit:

Write a recount of the visit using time conjunctions and past tense.

Use photographs and the words and phrases collected during the visit to write animal fact files. Supplement the information with internet research.

Choose a Puzzlewood animal and use the collected words and phrases gathered during the visit to write descriptive sentences or a 'What animal am I?' puzzle.

Imagine one of the animals escaped from Puzzlewood. Draw and write a 'Wanted' or 'Missing' poster.

Use the vocabulary gathered during the silent senses activity to write a Senses poem.

Use the same vocabulary to write a story setting for a mystery, quest or overcoming a monster story.

Find out more about the animals of Puzzlewood on our blog:

<https://www.puzzlewood.net/index.php/component/k2/item/7-meet-puzzlewoods-marvellous-menagerie>

